

INTERNATIONAL
PIER HEAD
SEFTON PARK
PENNY LANE
CROSBY BEACH
BALTIC TRIANGLE
LARK LANE
ROYAL ALBERT DOCK
ARRIVAL GUIDE 2025

HELLO AND WELCOME

All that remains is to book your travel to the UK, pack your bags, and join us in Liverpool - to coin a local phrase, we're made up!

Your first day at LIPA will be International Orientation on Friday 12 September 2025 (subject to your Student visa being approved). This is our opportunity to welcome you properly to LIPA and help you settle in and get to know your peers as well as taking you through some important UK Visa and Immigration formalities.

But before we see you there, this guide is full of helpful information and recommendations to help make your journey between now and then as quick and easy as possible.

We are always on hand to answer any questions you may have and to support and guide you.

Ryan, Darren and Katie
LIPA International Team

Email: international@lipa.ac.uk
Telephone: +44 (0) 151 330 3118

All the places named on the front cover are in and around the city of Liverpool. These are some of our favourite places and recommendations for you to explore.



"Having a wealth of different nationalities from across the globe sharing different cultures, customs and beliefs enhances and adds so much value to the diversity of the LIPA experience. I look forward to meeting you."

Cherise Weaver (She/her)
Head of Equality, Diversity and Inclusion



"Hello! We are so excited to have you join our international community at LIPA. As an international student elected into the Student Voice team, I am here to make sure that your voice is heard and to help make LIPA the best place it can be for everyone. Welcome to LIPA, we can't wait to see you shine!"

Emilia (She/her)
International Student Officer
Student Voice team





TRAVELLING TO THE UK

Liverpool is in the north-west of England and has excellent air, rail and coach links with the rest of the UK, Europe and beyond.

LIVERPOOL JOHN LENNON AIRPORT (LJLA)

easyJet and Ryanair are LJLA's main carriers, offering short-haul, low-cost direct flights to various European cities. Aer Lingus (codeshare with British Airways) also operate from LJLA allowing for connections through Dublin to several North American cities.

As many long-haul airlines fly into Amsterdam Schiphol Airport, Dublin Airport or Paris Charles De Gaulle, it may be worth considering flying into one of these and connecting onto a different flight operator to Liverpool rather than flying directly from your home country into a larger airport elsewhere in the UK.

There is a frequent bus service from LJLA to Liverpool city centre, or a taxi will cost £20 - £30.

Manchester
40 miles/67km

London
178 miles/287km



MANCHESTER AIRPORT

Our closest large international airport is Manchester Airport. From here there are regular coach and rail services to Liverpool city centre, taking roughly 60 - 90 minutes costing £15 - £20. We recommend taking a direct service so that you avoid changing or connecting in central Manchester, as this adds unnecessary time and stress to your journey. Once you arrive in Liverpool city centre, most student accommodation will be within a short taxi ride (typically costing less than £10).

Alternatively, a taxi from Manchester Airport to Liverpool will typically cost £60 - £80.

LONDON HEATHROW

London Heathrow is the largest airport in the UK and offers regular connecting flights to Manchester Airport. Taking a connecting flight often works out easier and cheaper than travelling into central London and then taking the train to Liverpool.

As great as London is, it is better to enjoy it for a weekend once you are settled in, rather than when you first step off a long international flight in a new country.

TOP 10 HAND LUGGAGE ESSENTIALS

- 1 **Passport**
- 2 **CAS documentation and supporting evidence**
- 3 **TB screening certificate if one was required to obtain your immigration permission**
- 4 **Travel insurance documents**
- 5 **A travel adaptor plug to charge your electronics on the go/at the airport**
- 6 **A small amount of cash and bank cards**
- 7 **Details of your destination in Liverpool and contact telephone number**
- 8 **This arrival guide and any other information you have received from us**
- 9 **Any medication you are taking**
- 10 **Sweater/jumper and a coat - September can be a little cold and wet in the UK**



"What I love about Liverpool is that it's so community based. There is a sense of pride that comes from people which I admire. At LIPA everyone and anyone can be who they are and be able to express themselves in any way they want."

Sylvia (She/her)
BA (Hons) Acting
(Musical Theatre)
USA

ARRIVING IN THE UK

No matter how and where you plan to enter the UK, on arrival you will be signposted to the UK immigration point.

If you are entering using a Student visa, you should be prepared on arrival to evidence your eVisa or digital immigration status and to answer any questions about your reasons for coming to the UK. We recommend you have your UKVI Entry Clearance email, CAS number, and LIPA offer email to hand.

Once you have passed immigration, the International Team are required to keep a copy of your boarding pass and travel documentation as evidence of your entry date. Please keep all boarding passes and travel documentation.

MONEY

UK currency is pounds Sterling (£) and pence (p). Digital banks with a UK "wallet" are a great temporary option for when you first arrive in the UK or ensure your debit/credit card is authorised for international transactions. We recommend travelling with no more than £50 in cash (in small denomination notes).

MOBILE DATA

Downloading an eSIM for your mobile/cell phone is a great way to be able to use roaming data at low cost during your first few days in the UK.

TOP TIP

Keep a record of your passport number and expiry date. This could be as simple as taking a photograph of it or keeping a copy in your hand luggage. Should you lose your passport, having these details to hand will be very helpful.



"One of the best things about LIPA is that I'm surrounded by so many talented people that push me to get better every day."

Gunnar (He/him)
BA (Hons) Music
(Songwriting & Production)
Iceland

LIVING IN LIVERPOOL AND THE UK

For some, this may be your first time in Liverpool or the UK - here are a few things to be aware of.

BRITISH CULTURE

Every culture has its own rules, values, expectations and methods of dealing with everyday situations.

You may notice a number of differences between the UK and your home country; for example, how loudly or softly one should speak, how close to another person one should stand or what is considered to be funny or offensive.

Adjusting to cultural differences and meeting people from across the world is part of the experience of studying in the UK and it may take time for you to adjust.

Watching British TV and films, listening to British radio stations or reading newspapers can be a great way to immerse yourself in British culture before you arrive, but once you arrive, don't forget to spend time and integrate with our British students, who join us from all across the UK.

If you do experience adjustment difficulties or homesickness, please do not hesitate to speak to staff in confidence. As well as the International Team you can also speak to your Personal Tutor or our Student Wellbeing & Disability team.

COST OF LIVING

In addition to your tuition fees and accommodation, you will also need to budget for food, clothing, insurance and socialising.

Liverpool is a student oriented city and therefore a very affordable city to live in, with the cost of living being approximately 40% cheaper than major global cities such as London, New York, Paris or Singapore (Numbeo, March 2025).

HEALTH AND WELLBEING

As an international student you are entitled to free medical treatment under the UK's National Health Service (NHS). Your entitlement begins from the start date of your course and covers treatment by a doctor / General Practitioner (GP) and hospital treatment.

You must ensure you have suitable medical or travel insurance to cover you for the period between arriving in the UK and the start date of your course.

Once you arrive in Liverpool you are strongly encouraged to register with a doctor. You may also choose to register with an NHS dentist, although you will have to pay for any dental treatment received (excluding regular check-ups).

If you have an existing medical condition that requires ongoing treatment and/or medication we recommend that you bring a professional diagnosis (in English) of the condition along with details of any treatment/medication you are receiving. This is likely to speed up any treatment/medication you may require in the UK.



"Pursuing a bachelor's degree in Dance at LIPA was the best decision of my life."

Augustine (He/him)
BA (Hons) Dance
India

SAFETY AND SECURITY

Liverpool is generally a safe and welcoming city to live in, but as in any large city you should take precautions. These can be small and simple steps such as:

- When you're out at night, plan your route and walk with friends rather than alone.
- In bars or pubs, do not leave your drink unattended and do not accept drinks from any strangers.
- In your accommodation, securely lock doors and windows and do not leave valuables on display.
- Be responsible for your personal property. If you own a bike, invest in a strong bike lock. If you purchase electronics, keep a note of any serial numbers.
- Do not assume everyone is as honest as you.

WORKING IN THE UK

Those with a Student visa may work on a part-time basis in the UK alongside their course. Your work permissions will be confirmed on your eVisa or digital immigration status.

Your permissions will state that you cannot work as an entertainer. "Entertainer" is not defined in the Immigration Rules, but the Home Office's Business Help desk has stated (in an email dated 3 September 2015) that "We take it to mean ... taking part in entertainment in any way other than as an amateur".

"Amateur" is defined in the Immigration Rules at paragraph 6 and it means "solely for personal enjoyment and not seeking to derive a living from the activity".

Therefore acting or performing as an amateur or just as a hobby is not working as an entertainer, and you can do it.

Performing is permitted so long as you are not paid for it.



"At LIPA you'll meet everyone you'll ever need for a production."

Stain (He/him)
BA (Hons) Dance
Norway



"I've always followed my instinct and my instinct told me to choose LIPA. The more time I spend here, the more I realise that this is where I fit in. Create, Create, Create - I think that's the most valuable part of being here. It's constantly challenging my creativity, and it's the most fulfilling feeling to see your creation come to life."

Horia (He/him)
BA (Hons) Acting
(Screen & Digital)
Romania



"I was looking for a postgraduate program that would enable me to bridge my academic background and my professional experience - and LIPA has been the perfect place to do that - everything from the small class-sizes, the opportunities for networking and project involvement and the positive and collaborative environment here. My favourite part is how easy it is to get involved with all sorts of projects and collaborate with other students from different disciplines, both in LIPA and in the broader Liverpool music scene as well."

Anna (She/her)
MA Music Industry
Management
USA



"One of my favourite parts of LIPA is how busy I am and how much one-on-one training I receive. This truly sets LIPA apart from any other university."

Olivia (She/her)
BA (Hons) Theatre &
Production Technology
USA





EXPLORE LIVERPOOL

Welcome to Liverpool - your new home. Your first few weeks will be an exciting time, with new places to explore and new people to meet.

ARTS AND CULTURE

We are in the heart of Liverpool's Georgian Quarter. Liverpool's two Cathedrals, the Anglican (the largest Cathedral in Britain) and the Metropolitan Cathedral (Britain's largest Catholic Cathedral) are both within a 5-minute walk and are both equally impressive.

Chinatown and the largest Chinese Arch outside of China is just a short walk away, as is St Luke's Church, more commonly known as the Bombed Out Church.

Destroyed in the Blitz of 1941, it is now home to open air theatre performances, Zumba classes and markets, among other events.

A short walk to the waterfront brings you to attractions including the historic Royal Albert Dock, Tate Liverpool, The Beatles Story and The British Music Experience.

FESTIVALS AND EVENTS

Liverpool plays host to some amazing festivals and events throughout the year. From LIMF (Liverpool International Music Festival) to the Liverpool Beer Festival, Liverpool Pride to Sound City, or the spectacular River of Light. There are too many to mention, but there is always something going on for you to enjoy.

PARKS AND COUNTRYSIDE

Liverpool is home to some truly amazing parks, the most loved by locals being Sefton Park in the south of the city, with over 200 acres of green space.

Along the coast at Crosby beach you will find 100 cast-iron, life-size figures, spread out along three kilometres of the foreshore and stretching almost one kilometre out to sea; a wonderful place for a summer stroll and very poignant as the tide moves in and out.

Further afield you will find the Peak District and the Lake District, two of the UK's finest National Parks.

RESTAURANTS, CAFES AND BARS

You will find a wide range of restaurants, cafes and bars, all serving something for every taste and budget.

Bold Street is a short walk away and is home to a range of independent restaurants, whilst the Baltic Market is a large open plan food hall - ideal for a larger group.

Many of your fellow students will also be performing in venues across the city and will quickly share their knowledge with you.

SHOPPING

Liverpool ONE is a large, open air shopping complex and home to UK and global brands, including the world's largest Lush store.

The city is also home to some amazing local traders including the Red Brick Market and Probe Records, which has been at the epicentre of the city's music scene since opening in 1971.

SPORTS

You can't come to Liverpool and not talk about football, as the city is home to two world famous teams: Liverpool Football Club and Everton Football Club.

There is more sport than just football though, with the city playing host to various major sporting events on an annual basis.

Our students also play sports for various teams or just for fun throughout the city.

For those less sporty, Junkyard Golf or PINS Social Club are ideal places to practice your crazy golf or ten pin bowling skills.



"After speaking with many schools, even my top choice, everything changed when I met staff (from LIPA). Speaking with them was not only deeply reassuring, but I knew that I had found the place I would belong."

Susie (They/them)
MA Acting
USA



"I chose LIPA because of how amazingly welcoming staff and students were and because of the great atmosphere I could sense as soon as I stepped into the building."

Uglia (She/her)
BA (Hons) Acting
Iceland

ENROLMENT AND INDUCTION

As the start of term approaches, you'll receive more information about enrolment, International Orientation and Induction Week.

ONLINE ENROLMENT

Online enrolment will open a few weeks before the start of term and is essential for all students. You must do this at your earliest convenience as failure to do so may result in delays to you receiving timetables, your LIPA email account, or receiving important information relating to your course.

INTERNATIONAL ORIENTATION

International Orientation takes place on Friday 12 September 2025. Attendance is strongly encouraged (subject to your Student visa being issued). This is our opportunity to welcome our new international students to LIPA, to help you settle in and get to know your peers all before Induction Week starts. We will also cover a lot of practical information about how to succeed and thrive with us.

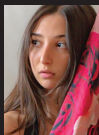
INDUCTION WEEK

Induction Week begins Monday 15 September 2025. This is a week full of introductions and activities relating to your course, teaching staff and facilities.

There will also be mandatory training sessions and opportunities to meet our Student Wellbeing & Disability team. You'll also be able to attend our Welcome Fair and numerous social activities, all organised by our Student Voice team.

During Induction Week you'll receive access to your LIPA email address and our Wi-Fi network. You'll also receive your student card which will give you access to the building and facilities, some of which are open 24/7.

During Induction Week we strongly recommend you register with a local doctor/GP and consider opening a UK bank account. You'll receive further information on how to do these closer to the time.



"Moving away from home isn't easy, but LIPA has made me feel at home and part of a family, whilst also being able to chase my dream at the same time."

Nina (She/her)
BA (Hons) Dance
Malta



"Moving away from home is tough, especially when it's somewhere you've never been before. From my point of view, adjusting to a new culture and environment is crucial to really building a new home away from home. Take a chance on building new friendships and keep an open mind when meeting new people. Don't compare a few months in a new place, to a lifetime spent at home because it really does take time to feel comfortable and find your feet again in any change of environment."

Richie (He/him)
BA (Hons) Music
(Songwriting & Performance)
Singapore

Mount Street
Liverpool
L1 9HF
United Kingdom

QUESTIONS

international@lipa.ac.uk
Instagram - @lipaliverpool
+44 (0)151 330 3118

lipa.ac.uk